

130-0100 Dual Release Door Hold-Open



DESIGNED FOR:

- Light to medium duty agricultural, construction or other equipment personnel doors that need to be held in an open position
- Any application where it is desirable to hold or retain a hinged door in an open position

NEW FEATURES/BENEFITS:

- New shroud design provides a means to absorb shock loads and provide door release
- Revised mounting provides easier installation and alignment

Global Locations:

TriMark Corporation
500 Bailey Avenue
P.O. Box 350
New Hampton, Iowa 50659
United States
Tel: 641-394-3188
Fax: 641-394-2392
1-800-447-0343
www.trimarkcorp.com

TriMark Europe
Cedar Court
Walker road
Bardon Hill
Coalville LE67 1TU
United Kingdom
Tel: +44(0)1530 512460
Fax: +44(0)1530 512461
www.trimarkeu.com

TriMark (Xuzhou)
Building A5 Jingwu Road
Xuzhou Economic
Development Zone
Xuzhou, Jiangsu
221004 PR China
Tel: +86 516 8773 0018
Fax: +86 516 8773 0058
www.trimarkcn.com



TriMark. Interactive. Product. Selector



FEATURES/BENEFITS:

- Simple, easy to use, rotating knob/pin latch
- Engineered to withstand vibration, shock, dust, dirt and moisture
- Ergonomic knob design
- Two-stage lead in helps align the striker and receiver to compensate for door sag
- Universal design
- Rotating knob(s) allows for the door to be released from the open position from either the inside of the cab or from the ground level
- Durability in tough applications
- Easy to install
- Easily adaptable to a wide variety of door/cab configurations
- Fills a niche between the low cost “friction type” hold-opens and top end rotary and bayonet style products presently available

MATERIAL:

- Striker and receiver components: Acetal, black
- Knob and mounting bracket components: Impact modified Nylon 6/6, black
- Shroud: Thermoplastic rubber (TPR), black
- Torsion spring: 302 stainless steel
- Mounting fasteners: Carbon steel, zinc plated, black chromate
- Gasket: Neoprene, black

INSTALLATION:

- Easy to install with special thread forming screws (included)
- Flange mounting and self adhesive gaskets (included) permits through glass mounting

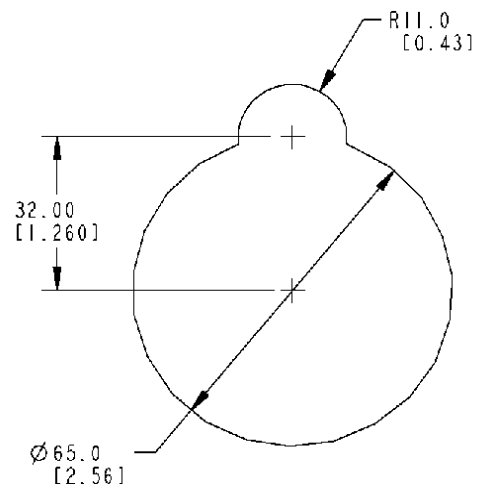
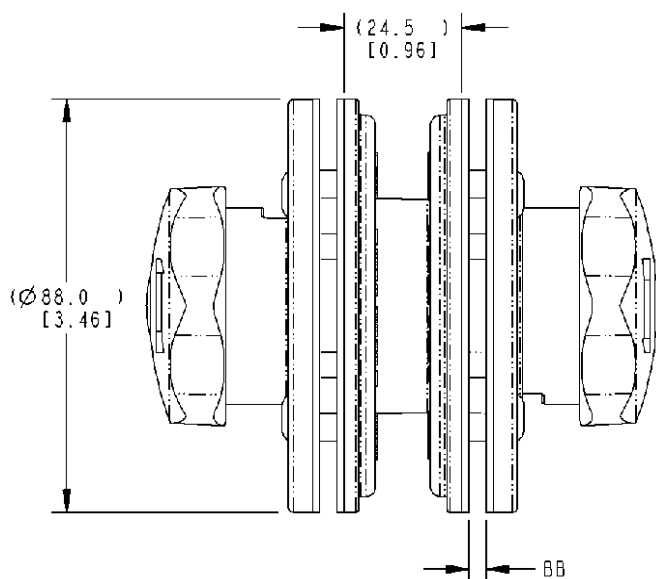
AVAILABLE:

- With gasket options to adapt to a wide range of door/cab thickness 3mm-6mm (.118-.236”)

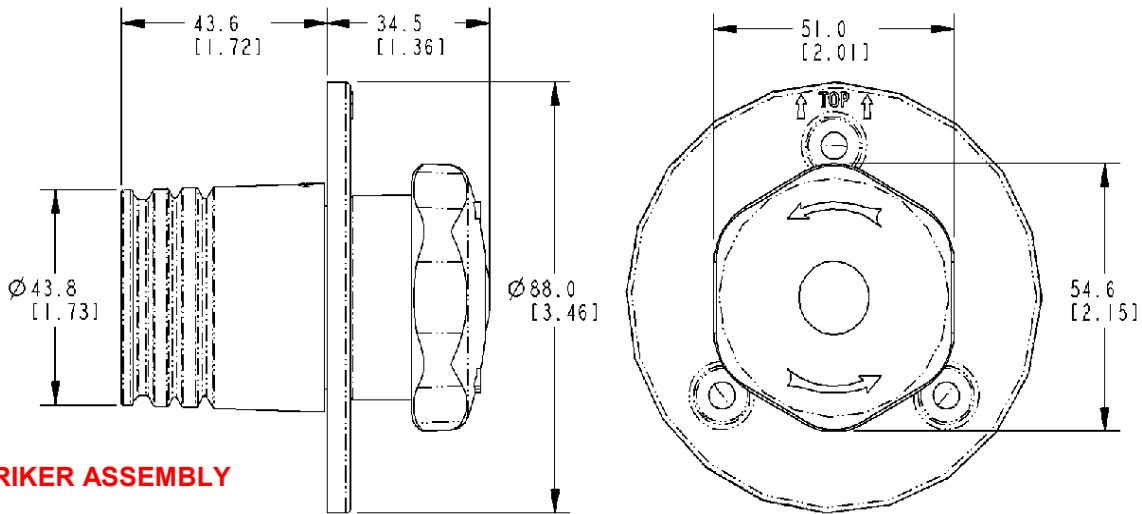
CAUTION: Door hold-open is not designed to secure a door in the closed position and does not comply with FMVSS 206 (ECE R11).

Individual part dimensions are for reference only. Refer to individual part drawings for complete dimensions, specifications, and installation procedures. Engineering assistance and application drawings are available.

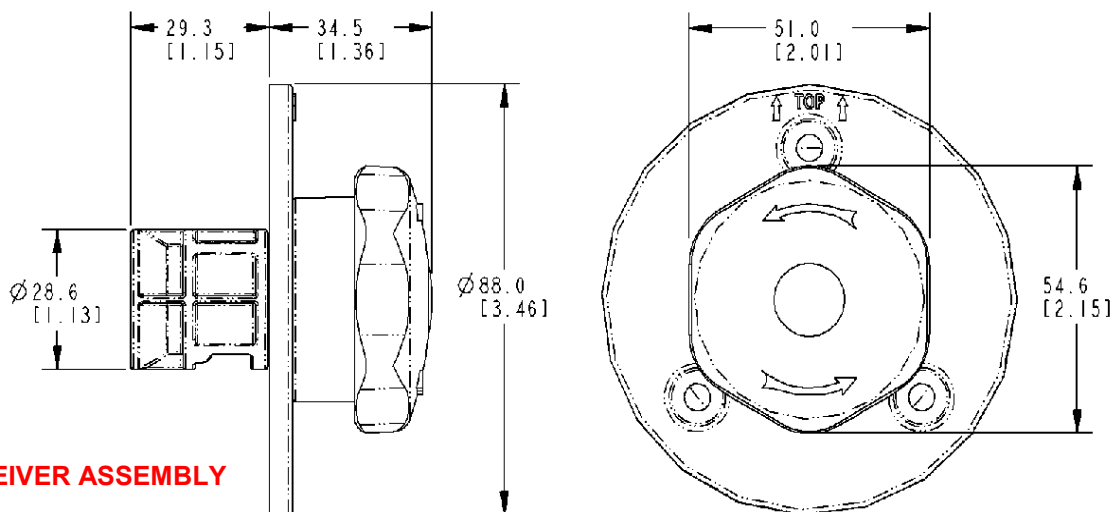
For more information visit
www.trimarkcorp.com



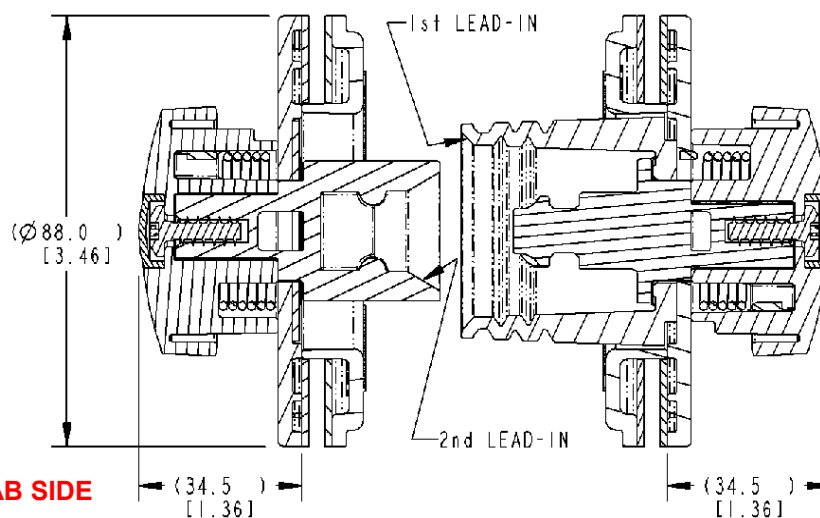
RECOMMENDED HOLE CUT-OUT



STRIKER ASSEMBLY



RECEIVER ASSEMBLY



RECEIVER / CAB SIDE

STRIKER / DOOR